



# 2025 Retail Price Guide

"A Tradition of Quality" Since 1922



Smidley Mfg., Inc.  
551 3rd Ave. SE  
P.O. Box 216  
Britt, IA 50423

641-843-4431  
641-843-4432 Fax  
800-392-5632 Toll Free  
[sales@smidley.com](mailto:sales@smidley.com)  
[www.smidley.com](http://www.smidley.com)



# SMIDLEY MFG., INC.

Retail prices: Effective on and after March 1, 2025.

All prices are subject to change without notice. This supersedes all previous price lists.

## TERMS

F.O.B. Factory,  
Restocking Charge 15%,  
\$50 minimum order  
Note: All Capacities for feeders and  
waterers are approximate

## WARRANTY

All items manufactured by Smidley Mfg., Inc. are warranted against defect in material and workmanship for one year from the date of shipment (but not against damage caused by accident, abuse, or facility installation) and we will repair or replace, free of charge (F.O.B. point of supply), all such defective parts; if returned to the factory, charges prepaid. No allowances will be made for repairs, alterations, or delays caused by such defective materials. This is the sole and exclusive warranty and all other warranties are specifically excluded.

## Cattle Feeders



Part Number	Description	Feed Count	Capacity	Retail Price
5351003S	Cattleman's Feeder w/confinement package & SS bottom	25 head	50 bu	\$2,761.00
5721003S	7 Super Steer Stuffer w/confinement package & SS bottom	50 head	100 bu	\$ 4,196.00
15187	10 Steer Stuffer w/confinement package & SS bottom	75 head	150 bu	\$ 5,631.00

Above configurations are standard stock items.



Part Number	Description	Feed Count	Capacity	Retail Price
5351003	Cattleman's Feeder w/confinement pkg	25 head	50 bu.	\$2,587.00
535100	Cattleman's Feeder	25 head	50 bu.	\$2,179.00
12414	½ (SINGLE SIDED) Super 7'	25 head	50 bu.	\$2,528.00
19729	½ (SINGLE SIDED) Super 7' NO ROOF w/Conf & SS	25 head	50 bu.	\$2,938.00
19442	½ (SINGLE SIDED) 10' w/Confinement & SS	25 head	50 bu.	\$4,223.00
5721003	7' Super Steer Stuffer w/confinement pkg	50 head	100 bu.	\$3,901.00
572100	7' Super Steer Stuffer	50 head	100 bu.	\$3,370.00
51021504	10' Steer Stuffer w/confinement pkg	75 head	150 bu.	\$5,157.00
5102150	10' Steer Stuffer	75 head	150 bu.	\$4,493.00

Other configurations available.

## Calf Feeders

Model #	Description	Capacity	Shipping Weight	Retail Price
54274	Super 4	30 bu.	650 lbs.	\$ 2,501.00
56274	Super 6	40 bu.	910 lbs.	\$ 3,088.00
58274	Super 8	55 bu.	1100 lbs.	\$ 3,630.00
510274	Super 10	65 bu.	1380 lbs.	\$ 4,116.00

Includes Stainless Steel bottom. Other sizes available



## Sheep/Lamb Feeders

Model #	Description	Capacity	Shipping Weight	Retail Price
18887	#6 Feeder	16 bu.	375 lbs.	\$ 2,939.00
17584	#8 Feeder	32 bu.	640 lbs.	\$ 3,268.00
18888	#10 Feeder	40 bu.	870 lbs.	\$ 3,597.00

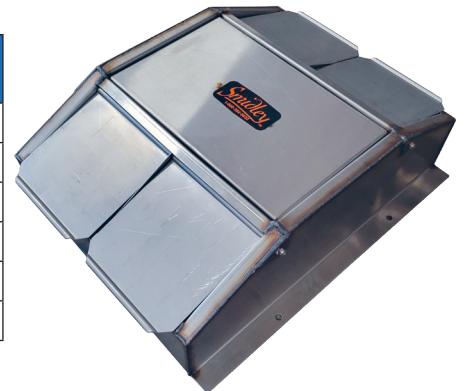
Other sizes available



## Hog Bars

Model #	Description	Shipping Weight	Retail Price
9150141S	1 Drink Single Sided	41 lbs.	\$ 649.00
9150152S	1/2- 2 Drink Single Sided (2 drinks one side)	50 lbs.	\$ 762.00
9150142S	2 Drink Double Sided (1 drink each side)	56 lbs.	\$ 768.00
9150154S	4 Drink Double Sided (2 drinks each side)	85 lbs.	\$ 1,026.00
9150166S	6 Drink Double Sided	125 lbs.	\$ 1,368.00
91501010S	10 Drink Double Sided	156 lbs.	\$ 2,143.00

Other combinations available



## Cattle Fountains

Model #	Description	Shipping Weight	Retail Price
9129CS	#2 Calf, Sheep, Lamb Fountain w/end float box	65 lbs.	\$ 982.00
9130CS	#3 Cattle Fountain w/center float box	105 lbs.	\$ 1,419.00
9130CHS	#3 Combination Fountain w/center float box	110 lbs.	\$ 2,446.00
9150CS	#5 Cattle Fountain w/center float box	129 lbs.	\$ 1,571.00
9150CHS	#5 Combination Fountain w/center float box	175 lbs.	\$ 2,474.00
9150CTS	#5 Cattle Trough	204 lbs.	\$ 2,075.00
9150STS	Sheep Trough	130 lbs.	\$ 1,730.00

End float box options available.





## WOODEN MEDEX® PIG FINISH FEEDERS

All wooden Medex® finish feeders are standard with the STAINLESS STEEL bottom package, which includes stainless steel bottom metal, stainless steel wrap around rub irons, front plates, channel drains and end drains. All feeders feature Smidley's famous agitator system.



### SUPER, DOUBLE-SIDED MODELS – MOST ECONOMICAL, HIGHEST CAPACITY OPTION.

Part #	Description	# Feed Openings	Capacity	Shipping Wt.	Retail Price
20204	Super 2	4	15 bu.	295 lbs.	\$1,468.00
18072	Super 4	8	30 bu.	450 lbs.	\$2,017.00
17716	Super 6	12	40 bu.	630 lbs.	\$2,699.00
18770	Super 8	16	55 bu.	765 lbs.	\$3,209.00
17746	Super 14	28	90 bu.	1300 lbs.	\$4,970.00

### STANDARD, DOUBLE-SIDED MODELS – WHERE HEIGHT MIGHT BE A RESTRICTION.

Part #	Description	# Feed Openings	Capacity	Shipping Wt.	Retail Price
20221	#2	4	8 bu.	265 lbs.	\$1,427.00
19437	#4	8	16 bu.	375 lbs.	\$1,937.00
17665	#6	12	24 bu.	515 lbs.	\$2,483.00

### SINGLE SIDED MODELS – WHERE INSTALLATION IS AGAINST A WALL, ETC.

Part #	Description	# Feed Openings	Capacity	Shipping Wt.	Retail Price
20027	½ #2	2	4 bu.	160 lbs.	\$1,128.00
20171	½ Super 2	2	7.5 bu.	240 lbs.	\$1,154.00
18062	½ Super 4	4	15 bu.	285 lbs.	\$1,592.00
20152	½ Super 8	8	27.5 bu.	535 lbs.	\$2,529.00
19226	½ #14	14	28 bu.	845 lbs.	\$3,782.00

Toe Boards additional. Includes top adjust, roof and galvanized lids. Nylon or Stainless Steel lids sold separately. Additional sizes available.

## HOG FARROWING HUTS

Model #	Description	Weight	Retail Price
70682	6' x 8' Hog House w/oak cross divider	640 lbs.	\$2,050.00



# PARTS PRICING

## WOODEN HOG FEEDERS

Model No.	Description	Weight	Price
490TLS	Stainless Lid		\$ 24.00
490TLN	Nylon Lid		\$ 20.00
490TL	Galvanized Lid		\$ 17.00
492TR	Regular Top Adjust Kit—2 Troughs Wide – even # versions, #2, #4 etc.		\$ 132.00
491TR	Regular Top Adjust Kit—1 Trough Wide – odd # versions, #1, #3 etc.		\$ 120.00
492TS	Super Top Adjust Kit—2 Troughs Wide		\$ 139.00
491TS	Super Top Adjust Kit—1 Trough Wide		\$ 124.00
490CER	Regular Complete End		\$ 222.00
490CES	Super Complete End		\$ 250.00
4922BW	#2 (Complete Bottom with Toe Boards)	60 lbs.	\$ 567.00
4942BW	#4 (Complete Bottom with Toe Boards)	110 lbs.	\$ 775.00
4962BW	#6 (Complete Bottom with Toe Boards)	163 lbs.	\$ 999.00
4982BW	#8 (Complete Bottom with Toe Boards)	207 lbs.	\$ 1,262.00
49102BW	#10 (Complete Bottom with Toe Boards)	263 lbs.	\$ 1,505.00
49122BW	#12 (Complete Bottom with Toe Boards)	335 lbs.	\$ 1,772.00
49142BW	#14 (Complete Bottom with Toe Boards)	425 lbs.	\$ 2,006.00
4921BW	1/2 #2 (Complete Bottom with Toe Boards)	45 lbs.	\$ 424.00
4941BW	1/2 #4 (Complete Bottom with Toe Boards)	83 lbs.	\$ 580.00
4961BW	1/2 #6 (Complete Bottom with Toe Boards)	122 lbs.	\$ 746.00
4981BW	1/2 #8 (Complete Bottom with Toe Boards)	155 lbs.	\$ 942.00
49101BW	1/2 #10 (Complete Bottom with Toe Boards)	197 lbs.	\$ 1,129.00
49121BW	1/2 #12 (Complete Bottom with Toe Boards)	251 lbs.	\$ 1,329.00
49141BW	1/2 #14 (Complete Bottom with Toe Boards)	319 lbs.	\$ 1,505.00
4922R	#2 Roof	20 lbs.	\$ 315.00
4932R	#3 Roof	38 lbs.	\$ 360.00
4942R	#4 Roof	40 lbs.	\$ 406.00
4952R	#5 Roof	46 lbs.	\$ 437.00
4962R	#6 Roof	56 lbs.	\$ 469.00
4982R	#8 Roof	67 lbs.	\$ 540.00
49102R	#10 Roof	77 lbs.	\$ 607.00
49122R	#12 Roof	87 lbs.	\$ 706.00
49142R	#14 Roof	100 lbs.	\$ 800.00

# PARTS PRICING

## WOODEN HOG FEEDERS

Model No.	Description	Weight	Price
4921R	1/2 #2 Roof	20 lbs.	\$ 237.00
4931R	1/2 #3 Roof	25 lbs.	\$ 272.00
4941R	1/2 #4 Roof	30 lbs.	\$ 302.00
4951R	1/2 #5 Roof	35 lbs.	\$ 328.00
4961R	1/2 #6 Roof	42 lbs.	\$ 350.00
4981R	1/2 #8 Roof	50 lbs.	\$ 403.00
49101R	1/2 #10 Roof	58 lbs.	\$ 455.00
49121R	1/2 #12 Roof	65 lbs.	\$ 530.00
49141R	1/2 #14 Roof	75 lbs.	\$ 598.00

## HOG BAR ACCESSORIES

Model No.	Description	Price
10038	Smidley D-Shaped Heating Element 245W	\$ 32.00
10045	Smidley W-Shaped Heating Element 245W (2 Drink)	\$ 32.00
10046	Smidley C-Shaped Heating Element w/two 90° bends (Old Style)	\$ 32.00
9150T	Thermostat	\$ 30.00
915LS	Drink Lid-S.S.	\$ 34.00
9152LR	Lid Rod 1 Drink, 2 Drink	\$ 23.00
9154LR	Lid Rod 4 Drink, 1/2 2 Drink	\$ 29.00
9156LR	Lid Rod 6 Drink	\$ 34.00
9152TLS	Top Lid-Stainless 2 Drink, 1 Drink	\$ 37.00
9151TLS	Top Lid-Stainless 1 Drink (Old Style)	\$ 37.00
9154TLS	Top Lid-Stainless 4 Drink, 6 Drink	\$ 58.00
91514TLS	Top Lid-Stainless 1/2 2 Drink	\$ 37.00
915SLC	Supply Line w/Barbs	\$ 12.00
915FP	Flush/Drain Plug	\$ 6.00
14536	Float & Valve Complete-Long	\$ 33.00
100932	Long Arm, Long Float	\$ 12.00
100927	Valve - High Pressure Orifice w/Hood	\$ 22.00
101119	Thumb Screw	\$ 2.00
101120	Bumper	\$ 2.00
14537	Float and Valve Complete-Short	\$ 33.00
100929	Short Arm, Short Float Med Tank	\$ 12.00
100928	Valve - Low Pressure Orifice w/Hood (Med Tank)	\$ 22.00

# PARTS PRICING

## CATTLE EQUIPMENT PARTS

Model No.	Description	Weight	Price
597RC	7' Stuffer Roof Complete	200 lbs.	\$ 1,137.00
597RT	Top Section of 7' Stuffer Roof	120 lbs.	\$ 616.00
597RB	Bottom Section of 7' Stuffer Roof	80 lbs.	\$ 520.00
5910RC	10' Stuffer Roof Complete	300 lbs.	\$ 1,442.00
5910RT	Top Section of 10' Stuffer Roof	175 lbs.	\$ 771.00
5910RB	Bottom Section of 10' Stuffer Roof	125 lbs.	\$ 670.00
10930	Steer Stuffer Agitator Section Complete	10 lbs.	\$ 75.00
10728	Ladder (complete)	17 lbs.	\$ 82.00
20287	10' Steer Stuffer Replacement V-Trough Galvanized	45 lbs.	\$132.00
5910BT-CR	10' Steer Stuffer Bottom Tin (Pair) Cut for Repair	45 lbs.	\$141.00
20289	10' Steer Stuffer Replacement V-Trough Stainless Steel	33 lbs.	\$255.00
5910BTS-CR	10' Steer Stuffer Bottom Tin Stainless Steel (Pair) Cut for Repair	45 lbs.	\$378.00
20286	7' Steer Stuffer Replacement V-Trough Galvanized	30 lbs.	\$88.00
597BT-CR	7' Steer Stuffer Bottom Tin (Pair) Cut for Repair	30 lbs.	\$91.00
20288	7' Steer Stuffer Replacement V-Trough Stainless Steel	22 lbs.	\$170.00
597BTS-CR	7' Steer Stuffer Bottom Tin Stainless Steel (Pair) Cut for Repair	30 lbs.	\$257.00

## CATTLE FOUNTAIN ACCESSORIES

Model No.	Description	Price
10038	#1 Cattle Fountain Heating Element      Quantity (1) (D-shaped element)	\$ 32.00
10045	#2 Cattle Fountain Heating Element      Quantity (1) (D-shaped element)	\$ 32.00
10038	#3 Cattle Fountain Heating Element      Quantity (2) (W-shaped element)	\$ 32.00
10038	#5 Cattle Fountain Heating Element      Quantity (2) (D-shaped element)	\$ 32.00
10038	#3 Combination (center float box) Heating Element      Quantity (4) (D-shaped element)	\$ 32.00
10038	#3 Combination (end float box) Heating Element      Quantity (3) (D-shaped element)	\$ 32.00
10038	#5 Combination Heating Element      Quantity (4) (D-shaped element)	\$ 32.00
10038	#3 Cattle Trough Heating Element      Quantity (2) (D-shaped element)	\$ 32.00
10038	#5 Cattle Trough Heating Element      Quantity (4) (D-shaped element)	\$ 32.00
10038	Sheep Trough Heating Element      Quantity (4) (D-shaped element)	\$ 32.00
14537	Float and Valve Complete for #1 & #2 Fountains	\$ 33.00
915FVF	Float and Valve Complete for #3 & #5 Fountains & Troughs	\$ 58.00



Smidley Mfg., Inc.  
551 3rd Ave. SE  
P.O. Box 216  
Britt, IA 50423

641-843-4431  
641-843-4432 Fax  
800-392-5632 Toll Free  
[sales@smidley.com](mailto:sales@smidley.com)  
[www.smidley.com](http://www.smidley.com)

